

2024



CCG | Chichester
College
Group

INTERNATIONAL



**STUDENT &
PARTNER COPY**

INTERNATIONAL STUDENT INFORMATION & PRICE LIST

www.ccgstudyabroad.com

Chichester
English Language School





CHICHESTER COLLEGE GROUP

Changing Lives Through Learning

A safe place to grow and learn

2024-2025 PRICE LIST

We take great pride in providing good outcomes for all our students. Our Chichester English Language School was recently inspected by the British Council, achieving 13 out of 15 areas of strength, which makes Chichester English Language School one of the highest-ranking FE College English Schools in the UK.

Chichester College Group has been admitted to the Chartered Institution of Further Education (CIFE). The CIFE is the only organisation in the UK that has been given royal assent to provide Chartered Status to FE providers. It represents the very best of further education.

Being part of the Award Winning Chichester College Group, a leading educational charity, means we put quality before profits. We offer competitive prices and remain focussed on our core mission: **“to change lives through learning”**.

We work hard to ensure that our teaching, welfare, accommodation and enrichment activities provide a safe environment where our students can learn and thrive.

We strive for excellence in all that we do and look forward to welcoming you to the Chichester College Group!

Steve Bannister

Steve Bannister



Group Director International & Anglia Examinations

Key CONTACTS



International Admissions & Visas

Cristina Chirita
studyabroad@chichester.ac.uk



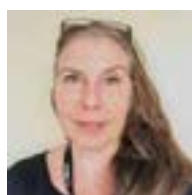
Worthing College Enquiries

Martin Cox
m.cox@worthing.ac.uk



Head of Accommodation

Denise Moon
denise.moon@chichester.ac.uk



Brighton MET College Enquiries

Anne Marie Queija
anne.mariequeija@gbmc.ac.uk



Chichester English Language School

Iain Tebb
iain.tebb@chichester.ac.uk



Chichester College & Groups Enquiries

Marie Kleshchova
kleshchovam@chichester.ac.uk



Student Welfare Chichester

Eleanor Fisk
eleanor.fisk@chichester.ac.uk



Student Welfare Worthing

Angela Kemp
a.kemp@worthing.ac.uk



Japanese Student Welfare

Mao Houlgate
houlgatem@chichester.ac.uk



Parents & Students- if you contact us directly and are working with one of our approved agents please make you provide their details when you get in touch. Don't worry- its won't cost you more!

Chichester College Group

www.chigroup.ac.uk



Chichester College Group is Sussex's leading education, training, and employability services provider.

We take pride in aiming to be one of the best UK education providers for all our students.

Our staff strive to deliver educational excellence for students, employers, and communities.

We have a clear purpose, **'changing lives through learning'**, and we do this through the work of our Colleges and commercial businesses, including Anglia Examinations, www.anglia.org (an exam board for English for Speaker of other Languages which operates worldwide), and First Steps Childcare; a chain of kindergartens which provide early years education in Sussex.

We aim to provide life-changing educational experiences and make every effort to care for our international students.

We have dedicated teams focusing on welfare, safeguarding and accommodation to ensure that international students' time with us is healthy, happy, and productive.

For more information about our international offer see:

www.ccgstudyabroad.com

Our campuses are within 90 minutes of London and Heathrow Airport.



Chichester College



www.chichester.ac.uk

Chichester College has been welcoming international students for over 30 years. Our sprawling campus offers residential halls on site, a sports hall, sports activities, a well-equipped gym and a choice of restaurants- all set in the welcoming, safe and historic city of Chichester. We offer a dedicated English Language School which is ranked in the top 5% of English Schools nationally- according to our most recent British Council inspection.

Specialisms: English as a Foreign Language, A-Levels, Vocational Courses, High School and Study Experience programmes. Groups are welcome

See Pages: 6-17



Brighton MET



www.gbmc.ac.uk

Located in the vibrant and bustling North Laines area of Brighton, Brighton MET provides the ideal setting to develop your creative skills and prepare for university. With well-equipped classrooms, studio space and dedicated teachers- our International Foundation in Art and Design is accredited by the University of Arts London. Brighton MET offers the ideal environment to develop creativity while taking in one of the UK's most diverse and creative cities.

Specialisms: International Foundation in Art & Design, University Arts London

See Pages: 22-23



Northbrook College



www.gbmc.ac.uk

Our Northbrook Campus is situated in the Seaside Town of Worthing and offers a wide choice of degree programmes in the creative arts. Northbrook graduates have been celebrated at the Oscars, BAFTA's, London Fashion Week and more. University Arts London accredits our degrees, which have been developed with industry specialists. Our teachers are experts in the creative industries.

Specialisms: Degree programmes in the Creative Arts, accredited by UAL

See Pages: 24-25



Worthing College



www.worthing.ac.uk

Worthing College welcomes international students to study a range of AS-Level Courses, A-levels and other courses for a term, semester or a full academic year. It is a friendly place with a strong sense of purpose, where teaching, learning and student success are priorities. With over 60 courses available, the college is one of the most popular places to study in Worthing.

Specialisms: One-year AS-Levels, two-year A-Levels and High School Programme.

See Pages: 18-19



Chichester English Language School

SCAN
QR
CODE

For more
info



Changing lives through learning

CHICHESTER

Chichester is located on the south coast of England, close to the South Downs National Park and to Chichester Harbour- an area of outstanding natural beauty. The city is famous for its cathedral, and historical landmarks; offering a truly British experience.

A SAFE AND FRIENDLY CITY



Chichester is a safe and friendly city that has been welcoming international students for over 30 years.

OUR OFFER



Fully equipped classrooms, laboratories, learning spaces, studios, college theatre and exhibition space.



College Library and Open Access Computer Centre.



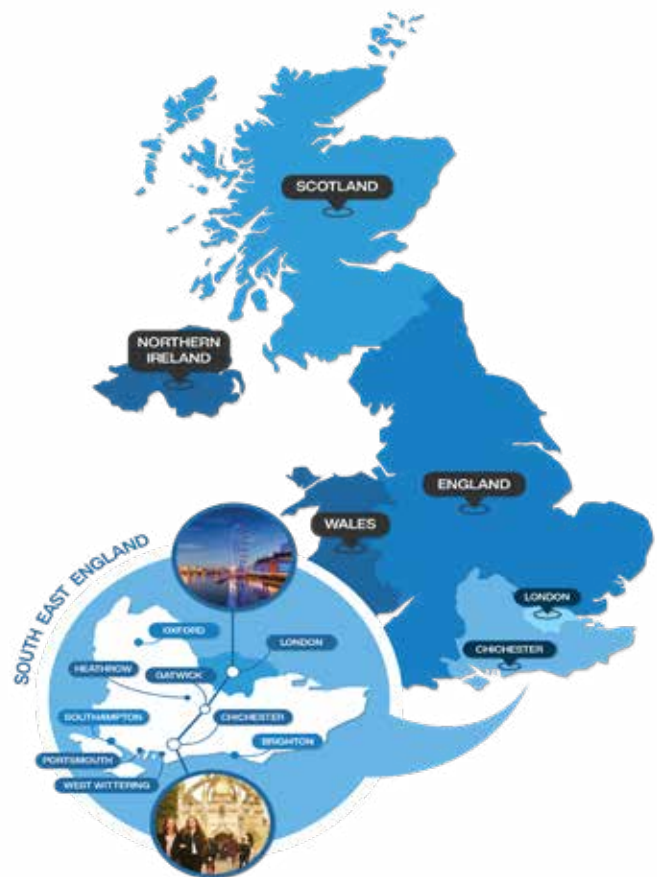
Fully equipped Sports Centre with a large indoor climbing wall and a modern fitness gym. All-weather sports pitch and courts for indoor and outdoor activities.



College restaurants, cafes, food outlets, college shop, hair and beauty salons.



Training kitchens, restaurants, and a simulated aircraft cabin.



COLLEGE LOCATION



Local attractions and amenities are within walking distance, you can easily explore the city on foot.



The train and bus station are a ten-minute walk away, providing easy access to London, Gatwick Airport, Brighton, Portsmouth, Bath and other cultural attractions.

Note: We offer a year-round enrichment programme including sport, leisure, social and cultural activities, such as football, netball, rugby, hockey, rock climbing, pizza night, film night, weekly excursions, and much more...

15 Hours & 21 Hours

GENERAL ENGLISH

[Read our latest
British Council
report.](#)

Improve your English skills and enjoy college life. Start any Monday.¹

| MON-FRI | 09:15 - 12:30 | 13:30 - 15:00 | FREE TIME | ENRICHMENT |
|------------------------------------|----------------------------|---|--------------------------|--|
| General English 15 Hours | Morning English Classes | Enrichment Activities | Enrichment Activities | We arrange regular trips or activities on Wednesday afternoons, Friday nights, and on Saturdays. Extra charges apply. |
| General English 21 Hours | Morning English Classes | Afternoon English Classes ² | Enrichment Activities | |

Note: A materials fee is required for all bookings: **£50** (2-11 weeks) or **£90** (12+ weeks).

ENGLISH CLASSES

- ✓ Improve grammar, vocabulary and pronunciation with an emphasis on reading, writing, listening and speaking skills.
- ✓ General English 15 allows students more time for enrichment activities whilst General English 21 offers afternoon classes to meet their needs.

AFTERNOON EXTRA CLASSES

- ✓ **ENGLISH EXTRA**
 - » Practising language skills in a communicative classroom environment through a wide variety of tasks and activities.
- ✓ **EXAM PREPARATION**³
 - » Cambridge, TOEIC, IELTS Exams
 - » Familiarising with exam structures, exam techniques and skills (Level B1+).

THE MAIN FEATURES

- ✓ Choice of two different options to develop your English language skills.
- ✓ Access to enrichment activities with UK and international students during and beyond term time.
- ✓ Getting helpful guidance on how to prepare for official exams.

OTHER INFORMATION

- ✓ Must be 16 years or over.
- ✓ You must stay for a minimum of 2 weeks.
- ✓ Maximum class size is 16.
- ✓ On your first day at college, you will have a full induction.
- ✓ A mandatory placement test will be sent to students prior to arrival to assess their English level.

¹ Apart from UK holidays and other college closure dates.

² No afternoon English classes on Wednesdays.

³ Subject to availability of classes. Availability will be advised at the time of application and/or after a placement test.

Exam options for learners

EXAMINATIONS

SCAN
QR
CODE
For more
info



Our teachers will help you choose the most suitable exam according to your level of English.

CAMBRIDGE EXAMINATIONS

- ✓ Chichester English Language School is proud to be an authorised Cambridge Exam Centre.
- ✓ Students can arrive before the exam dates and study towards an official Cambridge certificate, with preparation classes as a key part of their study programme.

SPEAKING EXAM DATES

- ✓ The speaking exam may happen a week before or after the date of the written test. It will be confirmed closer to the date in line with the Cambridge exam regulations. Remember to find out the date of your speaking test before booking your flight home.

We will be running exams in these exam windows. For up-to-date information and to book the exam, please scan the QR Code above.

| EXAM | EXAM WINDOW |
|--|---|
| FCE ^(G) CAE ^(G) CPE SPEAKING EXAM | 2 MARCH 2024 9 MARCH 2024 2 MARCH 2024 1 MARCH 2024 |
| FCE ^(G) CAE ^(G) CPE SPEAKING EXAM | 4 JUNE 2024 5 JUNE 2024 7 JUNE 2024 6 JUNE 2024 |
| FCE ^(G) CAE ^(G) SPEAKING EXAM | 25 JULY 2024 26 JULY 2024 24 JULY 2024 |
| FCE ^(G) CAE ^(G) CPE SPEAKING EXAM | 26 NOVEMBER 2024 27 NOVEMBER 2024 5 DECEMBER 2024 29 NOVEMBER 2024 |

PRICES:

FCE: £150,

CAE: £155 CPE: £160

(G) This symbol indicates the exams that are guaranteed to run.

ANGLIA EXAMINATIONS

- ✓ Alongside Cambridge examinations, Chichester College is proud to offer Anglia exams.
- ✓ Anglia Examinations offer a range of exams at different levels from beginner to expert. A discounted* Anglia exam is offered to each student studying English at the College.
- ✓ To book onto an Anglia exam please speak to your teacher on your first day.
- ✓ Anglia Examinations is proud to be part of the Chichester College Group. Further information can be found at www.anglia.org

Note: *subject to availability of examination dates.



English Language 15 hours a week

Chichester
English Language School



Our English 15 programme offers English classes in the morning. Class sizes are limited to 16 students. The focus of this course is English for communication. Designed to help students improve grammar, vocabulary, and pronunciation with an emphasis on reading, writing, listening and speaking. Start any Monday with a minimum stay of two weeks.

EFL January-December 2024 (CEFR Levels A2-C2)

| COURSE DESCRIPTION | DURATION | PRICE |
|-------------------------------------|-------------|---------------|
| GENERAL ENGLISH 15HRS (EFL15) | 2-11 WEEKS | £220 (WEEKLY) |
| GENERAL ENGLISH 15HRS (EFL15) | 12-24 WEEKS | £200 (WEEKLY) |
| EFL15 (not including Summer School) | 25-37 Weeks | £190 (WEEKLY) |



English Language 21 hours a week



Our English 21 programme provides the maximum opportunity to study English. This more intensive English language course concentrates on improving grammar, vocabulary and pronunciation with a greater focus on the skills of reading, writing, listening, speaking and successful communication. Start any Monday with a minimum stay of two weeks. Class sizes are capped at 16 students to ensure that you receive the best possible learning experience.

EFL January-December 2024 (CEFR Levels A2-C2)

| COURSE DESCRIPTION | DURATION | PRICE |
|-------------------------------------|-------------|---------------|
| GENERAL ENGLISH 21HRS (EFL21) | 2-11 WEEKS | £255 (WEEKLY) |
| GENERAL ENGLISH 21HRS (EFL21) | 12-24 WEEKS | £230 (WEEKLY) |
| EFL21 (not including Summer School) | 25-37 WEEKS | £210 (WEEKLY) |



AGES 16 & OVER

Chichester
English Language School

Learn alongside UK students

STUDY ABROAD

Improve your English and focus on academic subjects.

SCAN
QR
CODE

For more
info



Students can choose from a range of subjects in A-levels or Vocational courses.

2 A-LEVEL SUBJECTS

OR

1 VOCATIONAL SUBJECT

ENGLISH
CLASSES

ENRICHMENT
ACTIVITIES

STUDY ABROAD

Note: A materials fee is required for all bookings: **£50** (2-11 weeks) or **£90** (12+ weeks).

THE MAIN BENEFITS

- ✓ Study alongside UK students.^[1]
- ✓ A minimum of 6 hours of English classes with our international students.
- ✓ Approximately 20 hours of tuition per week.
- ✓ An exciting enrichment programme with optional excursions and evening activities.^[2]

ENTRY REQUIREMENTS

- ✓ Start dates: January or September
- ✓ Join for 1, 1.5 or 2 terms.
- ✓ Course available at Levels B1-C2; however different subjects will have different English level requirements, generally B1 for Vocational and B2 for academic courses; please enquire.
- ✓ A portfolio may be required for acceptance onto some courses; please enquire.

SUBJECT CHOICES

| CREATIVE ARTS | PERFORMING ARTS & MUSIC | SCIENCE & MATHS | SOCIAL SCIENCES | COMPUTING | SPORTS | BUSINESS | CAREER FOCUSED |
|---------------------------------------|------------------------------------|--|----------------------|---|----------------------|--|---------------------------------|
| FILM STUDIES | ACTING ^{[2]+[4]} | BIOLOGY ^[3] | PSYCHOLOGY | COMPUTER SCIENCE | PHYSICAL EDUCATION | BUSINESS | TRAVEL & TOURISM ^[1] |
| MEDIA STUDIES | DANCE ^{[2]+[4]} | CHEMISTRY ^[3] | SOCIOLOGY | COMPUTING | SPORT ^[1] | ECONOMICS | HAIR & BEAUTY ^[1] |
| GRAPHIC DESIGN ^[4] | MUSICAL THEATRE ^{[2]+[4]} | PHYSICS | HISTORY | | | BUSINESS | HOSPITALITY ^[1] |
| PHOTOGRAPHY ^{[3]+[4]} | | MATHS | GEOGRAPHY | SUBJECT CHOICES | | | ENGINEERING ^[1] |
| FINE ART ^[4] | | FURTHER MATHEMATICS ^[5] | RELIGIOUS STUDIES | DARK BLUE COURSE | | NOTES | |
| ART & DESIGN ^{[3]+[4]} | | APPLIED MEDICAL SCIENCE ^[3] | POLITICS | ➤ Please select either ONE Vocational subject shown in dark blue. | | [1] Students will not be entered for national exams. | |
| FASHION & TEXTILES ^{[3]+[4]} | | CRIMINOLOGY | APPLIED PSYCHOLOGY | LIGHT BLUE COURSE | | [2] Some trips or events require additional payment. | |
| CREATIVE MEDIA PRODUCTION | | ENVIRONMENTAL SCIENCE | HEALTH & SOCIAL CARE | ➤ Or a maximum of TWO A-Level subjects shown in light blue. | | [3] Additional costs apply for uniform and/or kits. | |
| | | | | | | [4] Audition or portfolio required. | |

All information is correct at the time of printing. Please note that it may be subject to change.
Before applying, we recommend that you contact us.



Study Abroad Programme

Chichester
English Language School



This course is designed for students who want to focus on learning English as a Foreign Language. You can start in September or January and participate in up to two A-Level subjects or a Vocational subject where you will study alongside our British students. Your reports will focus on your English development delivered by our dedicated English Language School, where you will study with other international students.

September 2024 - June 2025

| COURSE DESCRIPTION | DURATION | PRICE |
|---------------------------|----------|-------|
| AUTUMN TERM | 14 WEEKS | £2800 |
| SEPTEMBER START 1.5 TERMS | 20 WEEKS | £4000 |
| SPRING TERM | 11 WEEKS | £2200 |
| JANUARY START 2 TERMS | 20 WEEKS | £2200 |



Chichester College Study Abroad Programme

**Focus on your English Language development
while keeping up with your academic studies.**



Gain valuable experience

HIGH SCHOOL PROGRAMME

A study programme to advance your academic studies and English.

SCAN
QR
CODE
For more
info



3 A-LEVEL
SUBJECTS



ENGLISH
CLASSES



SPORT



ENRICHMENT
ACTIVITIES



HIGH SCHOOL
PROGRAMME

Note: A material fee is required for all bookings: **£50** (2-11 weeks) or **£90** (12+ weeks).

THE MAIN BENEFITS

- ✓ Study alongside UK students.⁴
- ✓ Approximately 20 hours of tuition per week.
- ✓ Access to Sports classes.
- ✓ A minimum of 6 hours* of English classes with our international students.
- ✓ An exciting enrichment programme with optional excursions and activities.⁵
- ✓ A final college report detailing the student's academic progress⁶

ENTRY REQUIREMENTS

- ✓ Start dates: January or September
- ✓ Join for 1, 1.5 or 2 terms.
- ✓ Course available at Levels B2-C2; however different subjects will have different English level requirements, B2 for academic courses; please enquire.
- ✓ A portfolio may be required for acceptance onto some courses; please enquire.

SUBJECT CHOICES

| CREATIVE ARTS | SCIENCE & MATHS | SOCIAL SCIENCES | COMPUTING | SPORTS | BUSINESS |
|--------------------------------|------------------------------------|--------------------------------|------------------|--------------------|-----------|
| FILM STUDIES | BIOLOGY ^[1] | PSYCHOLOGY | COMPUTER SCIENCE | PHYSICAL EDUCATION | BUSINESS |
| MEDIA STUDIES | CHEMISTRY ^[1] | SOCIOLOGY | | | ECONOMICS |
| GRAPHIC DESIGN ^[2] | PHYSICS | HISTORY | | | POLITICS |
| PHOTOGRAPHY ^{[1]+[2]} | MATHS | GEOGRAPHY | | | |
| FINE ART ^[2] | FURTHER MATHEMATICS ^[3] | RELIGIOUS STUDIES | | | |
| | CRIMINOLOGY | MEDICAL SCIENCE ^[3] | | | |
| | ENVIRONMENTAL SCIENCE | APPLIED PSYCHOLOGY | | | |

KEY

- ^[1] Additional costs apply for uniform and/or kits.
- ^[2] Audition or portfolio required.
- ^[3] Need a high level of Maths.

Accredited by the
BRITISH COUNCIL
for the teaching
of English in the UK

Note: ^[4] Students will not be entered for national exams.

^[5] Some trips or events may require additional payment.

^[6] Validation service is available to students at an additional cost of £190.



Chichester High School Programme

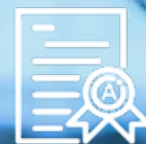


For students in full-time education in their home country. Study up to three A-Levels and English as a Foreign Language. Receive a detailed academic report at the end of your study, which you can take back to your school or educational institution. For your A-Levels, you will study alongside British students. English is taught in our dedicated language school.

September 2024- June 2025

| COURSE DESCRIPTION | DURATION | PRICE |
|---------------------------|----------|-------|
| AUTUMN TERM | 14 WEEKS | £3500 |
| SEPTEMBER START 1.5 TERMS | 20 WEEKS | £5000 |
| SPRING TERM | 11 WEEKS | £2750 |
| JANUARY START 2 TERMS | 20 WEEKS | £5000 |





Chichester College has outstanding pass rates for A-levels

Study 2 Year A-Levels at our Chichester Campus

SCAN QR

For more about A-Levels



Improve your career prospects A-LEVELS

A-levels are ideal if you wish to progress to university. These level 3 courses are considered the gold standard of UK qualifications. Most students study three A-levels and continue onto higher education.

| | PRICE | SCHOLARSHIP |
|---------------------|--------|---------------------|
| YEARLY TUITION FEES | £8,500 | £2,250 ¹ |

ENTRY REQUIREMENTS

- ✓ 5 GCSE grades 9-4 (A*-C) in Maths and relevant subjects (or the equivalent).²
- ✓ UKVI SELT (overall CEFR B2 level) from an approved test centre with no element below B2.
- ✓ 16 years or older.
- ✓ Successful interview with a course leader or college officer.
- ✓ A personal statement.
- ✓ Financial proof showing you have the necessary maintenance funds for your stay.
- ✓ Compulsory supplements and other entry requirements may also apply (e.g. portfolio or audition for Art related subjects).

ADDITIONAL INFORMATION

- ✓ A-Level English Literature and Language, English Language, Law, History, Politics and Media Studies are not currently available for international students.
- ✓ Additional costs may apply for some equipment.
- ✓ Successful candidates are required to complete a GCSE to A-Level transition project.
- ✓ Please check www.gov.uk for current visa requirements.

¹ **Note:** A limited number of scholarships of £2,250 per student will be awarded based on the interview and the student's academic results.

² **Note:** for Maths and any Science A-levels, grade 6 (B) minimum is required in GCSE Maths and Science (or the equivalent). For Computer Science experience using high level programming languages is required.

A- Level Information



Why study A-Levels?

For university entrance preparation, international students often ask about the benefits of studying A-levels. Here are some reasons why studying A-levels in the UK might be a good choice for you.

- ✓ **Academic Quality**
Having A-level qualifications will improve the quality of your university applications, whether you study in the UK or any other part of the world.
- ✓ **Knowledge of the UK education system**
Studying A-levels in the UK allows you to gain familiarity with the UK's education system. You will gain experience in teaching styles, learning methodologies, and academic culture. A-levels provide a foundation for adapting to different academic types of learning, which you can apply worldwide.
- ✓ **Improve your English language ability**
For international students, studying A-levels in the UK allows you to develop your English language skills. You will be learning alongside British students. You will quickly understand the idioms and classroom vocabulary you need, skills that are hard to learn from textbooks alone.
- ✓ **Prepare for the UK university experience**
A-Levels equip you with subject matter knowledge and help to develop essential university skills. Learn effective study techniques, critical thinking, self-directed study and research skills.
- ✓ **An Immersive experience**
Immerse yourself in the multicultural environment of the UK and gain cultural insights, expand your worldview, and build a network of friends and connections.



Chichester College A-Level Choices

Accounting | Biology | Business | Computer Science | Chemistry | Drama
Economics | Environmental Science | Film Studies | Fine Art | Further Maths
Geography | Graphic Design | History | Maths | Media Studies | Photography
Physical Education | Physics | Politics | Psychology | Religious Studies | Sociology

A-Level options are also available at our Worthing campus.



Qualifications designed to allow you to progress into industry.

SCAN QR

For more about Vocational



Develop your practical skills VOCATIONAL

Our vocational courses are ideal if you have a passion for a specific career area and want to develop your knowledge and skills. See our website for options and course durations.

See page opposite for course length.

| | PRICE | SCHOLARSHIP |
|---------------------|--------|---------------------|
| YEARLY TUITION FEES | £8,500 | £2,250 ¹ |

ENTRY REQUIREMENTS

- ✓ 4 or 5 GCSE grades 9-4 (A*-C) in English, Maths and relevant subjects (or the equivalent).**
- ✓ UKVI SELT (overall CEFR B2 Level - 5.5 IELTS) from an approved test centre with no element below B1- 5.0 IELTS.
- ✓ 16 years or older.
- ✓ Successful interview with a course leader or college officer.
- ✓ A personal statement.
- ✓ Financial proof showing you have the necessary maintenance funds for your stay.
- ✓ Compulsory supplements and other entry requirements may also apply (e.g. portfolio or audition for Art-related subjects).

ADDITIONAL INFORMATION

- ✓ Additional costs may apply for uniform and/or some equipment.
- ✓ Please, always check entry requirements with us.
- ✓ Please check www.gov.uk for current visa requirements.

COURSE SUBJECTS

- » Art, Design & Media
- » Business and Management
- » Computing & IT
- » Engineering
- » Health, Care and Childhood Studies
- » Performing Arts and more!

¹ Note: A limited number of scholarships of £2,250 per student will be awarded based on the interview and the student's academic results.

Vocational Qualifications

Our vocational courses give you the advantage of practical, work-related skills and experience together with a recognised and highly respected qualification.

Learn in classes with UK students and possibly other international students.

Our vocational courses (Level 3) are ideal if you are passionate about a specific career area and want to develop your knowledge and skills.

Vocational courses have been developed in partnership with employers to ensure that students learn relevant skills for their industry. These are work-related courses designed to take a practical approach to learning. They are also particularly suited to students who prefer the practical side of learning rather than sitting in a classroom and studying for exams.

They are nationally recognised and highly respected by employers and universities.

The benefits of studying a vocational course:

- » **Hands-on Approach:** Vocational courses are great if you know which industry you want to enter. Take part in practical lessons, and you will be ready to enter employment when you finish.
- » **Improve your Employment Prospects:** Develop the skills and knowledge employers want.
- » **A Pathway to University:** Alongside A-Levels, these are the most widely recognised qualifications for admission to higher education. A two-year BTEC Level 3 Extended Diploma is the equivalent of studying three A Levels.
- » **Develop Transferable Skills:** Vocational qualifications enable participants to develop transferable skills in people management, teamwork and time-keeping, which benefit many other careers.
- » **Demonstrable Practical Skills:** Vocational qualifications offer a way of demonstrating a practical knowledge of theoretical ideas.



Vocational Choices

Level 3 Courses- Study for 1 or 2 years

Animation & Illustration | Architecture & Interiors | Art & Design (UAL)
Creative Media Production | Fashion & Textiles | Hospitality
Creative Sound Design for Film & Gaming | Uniformed Protective Services
Sport | Sport Science

One Year AS-Level Courses

High School Programme

WORTHING

Located in the friendly seaside town of Worthing in West Sussex, our lively campus is renowned for delivering AS-Levels, High School and sports programmes for International students.

WORTHING FACILITIES

- ✓ Library
- ✓ Loaned Laptops
- ✓ Gym
- ✓ West Hub Café
- ✓ Free Wi-Fi
- ✓ The Premier Shop

WORTHING SPORTS

Stay fit, learn teamwork and improve your game with Worthing's reputable sports academies. Combine sports with your chosen academic pathway.

- ✓ Men's Rugby & Football
- ✓ Women's Rugby & Football
- ✓ Basketball
- ✓ Netball

WHAT WE OFFER

- ✓ **AS-Levels**
These level 3 courses allow you to continue your studies in up to three subjects while you study abroad at Worthing College. You will learn alongside British students and sit an exam at the end of your year-long course.
- ✓ **High School Programme**
Attain a better level of English fluency while studying alongside British students at Worthing College- rated Outstanding by Ofsted (The Office for Standards in Education, Children's Services and Skills). Study for one term or a semester (September to February or January to May).
- ✓ **A-Levels**
Most students who enrol on an A-level do so as preparation to apply to University. A-Levels are the gold standard for entry into UK universities. Choose subjects best suited to your career aspirations and learn English while you gain the qualifications to help you succeed in life.
- ✓ **Applied Courses**
Slightly more practical courses for those who do not want to sit exams. Applied courses are practical and focus on "learning by doing". These courses help prepare you for your future career.

Worthing College High School Programme

September 2024- June 2025

| COURSE DESCRIPTION | DURATION | PRICE |
|-------------------------------|----------|-------|
| ONE YEAR HIGH SCHOOL | 42 WEEKS | £8500 |
| AUTUMN TERM (SEP-DEC) | 14 WEEKS | £3750 |
| AUTUMN 1.5 TERM (SEP-end JAN) | 19 WEEKS | £4250 |
| NEW YEAR (JAN-APR) | 11 WEEKS | £3000 |
| NEW YEAR (JAN- end MAY) | 20 WEEKS | £4500 |
| NEW YEAR (FEB- end MAY) | 16 WEEKS | £3825 |



Worthing College A-Levels

| COURSE DESCRIPTION | DURATION | PRICE |
|---------------------------------|----------|-------|
| ONE YEAR A-LEVELS | 42 WEEKS | £8500 |
| ONE YEAR AS-LEVEL (EU STUDENTS) | 42 WEEKS | £6950 |



Worthing Airport Taxi Transfers

| | |
|-------------------------|------|
| ✓ LONDON HEATHROW (LHR) | £230 |
| ✓ LONDON GATWICK (LGW) | £180 |

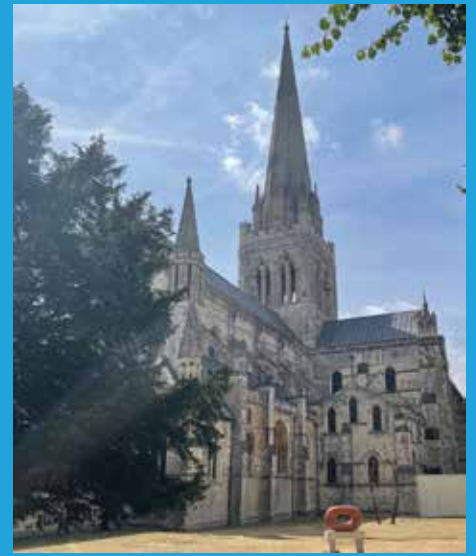
Sports Academies

Worthing College offers Men's and Women's Rugby Academies. See our website for details



Level 3 Subjects at Worthing College

Applied Science | Art & Design | Biology | Business Studies
Chemistry | Computer Science | Computing | Economics | English
Electronics | Engineering | English language & Literature
Environmental Science | Film Studies | Financial Studies | Fine Art
French | Geography | Graphic Design | History | Mathematics
Photography | Physical Education | Physics | Politics | Psychology
Applied Psychology | Sociology | Spanish | Textile Design





Chichester College



International study for aspiring creatives

Study in the vibrant city of Brighton

MET Brighton
Metropolitan
College

BRIGHTON

Situated in the heart of Brighton, just five minutes walk from Brighton Station in the bustling North Laine area- our MET campus offers a range of international courses. Broaden your academic horizons by studying in one of the UK's most vibrant and diverse coastal cities.

WHAT WE OFFER

- ✓ Extensive and well-equipped range of specialist working environments and art studios.
- ✓ 3D printer, laser cutting machine and large-scale inkjet printer.
- ✓ Photographic suite and traditional dark rooms.
- ✓ Printmaking workshop (Screen, lino, metal and dry point etching)
- ✓ Plaster, ceramics and glass workshops.
- ✓ 3D, wood, metal and plastics workshop, including a forge.
- ✓ Pattern cutting room, sewing room and fashion studio.

A VIBRANT, CREATIVE CITY

- ✓ Brighton is well known in the UK as a creative hub; a vibrant city that attracts creatives of all kinds and boasts a dynamic community of performers, artists and digital industries. Our International courses at Brighton MET are aimed at creative arts and digital students.

COLLEGE FEATURES

Part of the OFSTED outstanding Chichester College Group, providing the reassurance of quality-led education at all times.

- ✓ Individual studio space.
- ✓ Space for developing large-scale art and installation pieces.
- ✓ Life drawing classes.
- ✓ A highly experienced teaching team.
- ✓ Opportunities to gain valuable live project experience with external clients.
- ✓ A strong track record of progression to prestigious universities.

If you have questions about studying at **Brighton MET College** please contact Anne Marie Queija.
Email: anne.mariequeija@gbmc.ac.uk



**Progression to UAL degree courses
at CCG or any university.**

Foundation Diploma in

ART & DESIGN

**SCAN
QR**

For more
about
this course



Take part in exciting and challenging creative projects to extend your creative, expressive and technical skills. Work in a range of different scales and mediums, sometimes collaboratively or as part of a small creative team.

This course reflects real-life creative practices in the Creative Arts industry. Students start at the beginning of the academic year in September.

ANNUAL TUITION FEES

PRICE

£15,000

ENTRY REQUIREMENTS

- ✓ 18 years or older.
- ✓ Five GCSEs or equivalent at grade 9-4 including Maths, English and a creative subject.
- ✓ An IELTS score of 5 or higher.
- ✓ A digital portfolio.
- ✓ To have completed secondary education in a creative arts subject.
- ✓ At least one A-Level at grade A*-C or equivalent in a creative subject.
- ✓ A school reference with evidence of predicted grades.
- ✓ To demonstrate commitment and passion for the creative arts.
- ✓ Applications should be sent to ual.ifad@gbmc.ac.uk or please contact us at studyabroad@chichester.ac.uk.

AVAILABLE PATHWAYS

- » Fine Art
- » Fashion & Textiles
- » Graphic Design
- » 3D Design
- » Illustration

ADDITIONAL INFORMATION

- » Students will have access to spacious artists' studios, a well-equipped 3D workshop, a hand-tools workshop, a ceramics studio, photographic darkroom, photographic studios, printmaking studio, Mac suites and a pattern cutting room.
- » Introduction to the essential issues in the Creative Industries including Carbon Literacy and Ethics, with opportunities to explore sustainable design practices.
- » Opportunity to take part in a live catwalk fashion show.
- » Additional four hours per week of English for Academic purposes focussed on language to support the iFAD modules.



Courses providing progression
to top UK universities,
degrees and careers.

SCAN
QR

For more
about
H.E



Accelerate your academic progress HIGHER EDUCATION

| COURSE DESCRIPTION | ANNUAL FEE |
|--|----------------|
| ACCESS TO HIGHER EDUCATION (ONE YEAR PATHWAY COURSE, LEVEL 3) | Please enquire |
| HNC/HND (EQUIVALENT TO YEARS 1 & 2 OF UNDERGRADUATE, LEVELS 4 & 5) | £8,950 |
| TOP-UP DEGREE IN BUSINESS or CREATIVE MEDIA (EQUAL TO YR 3 UNDERGRADUATE, LEVEL 6) | £11,500 |
| UAL ART & DESIGN DEGREE PROGRAMMES (3 YEARS WORTHING NORTHBROOK CAMPUS) | £18,000 |

ACCESS TO H.E. (LEVEL 3)

- ✓ You will generally need GCSE Maths and English at grade 4 (C) or above (or equivalent) although individual course requirements vary.
- ✓ Successful interview with a course leader or college officer.
- ✓ UKVI SELT (overall CEFR C1 level) from an approved test centre with no element below B2.

HNC & HND (LEVELS 4 & 5)

- ✓ These vocationally-focused courses are highly regarded by universities and employers and provide students with the education, training and confidence needed to establish a successful career.

TOP-UP DEGREE (LEVEL 6)

- ✓ If you already have an HND and would like to study further, a top-up degree is an ideal way to turn your qualification into a full honours degree.

ENTRY REQUIREMENTS

- ✓ Entry requirements for H.E. courses are unique for each course and are subject to change. Please always check with our team for entry requirements.

COURSE SUBJECTS

- » Animal Management Business
- » Computer Design & Security
- » Creative Media & Journalism
- » Performing Arts & more, get in touch!



ART

DESIGN

THEATRE

MUSIC

Northbrook College

Over 100 years of creative expertise

Originally founded in 1912, our reputation for creative arts expertise has flourished over the years.

Northbrook College is situated in Worthing on the South Coast of England. Our graduates have been celebrated at the Oscars, BAFTA's, London Fashion week and more. We are proud of our heritage, but the future is happening now...that's where you come in.

Our creative degrees are validated by the University of the Arts London (UAL)

CORE VALUES

- ✓ **Ambition:**
Our students show tenacity and drive to meet their future goals.
- ✓ **Community:**
We work collaboratively, producing talent for the local region and beyond.
- ✓ **Creativity:**
We celebrate our creative spirit and actively encourage our students to explore new ideas.
- ✓ **Excellence:**
We strive for excellence in all that we do, in our work and in the work of our students.

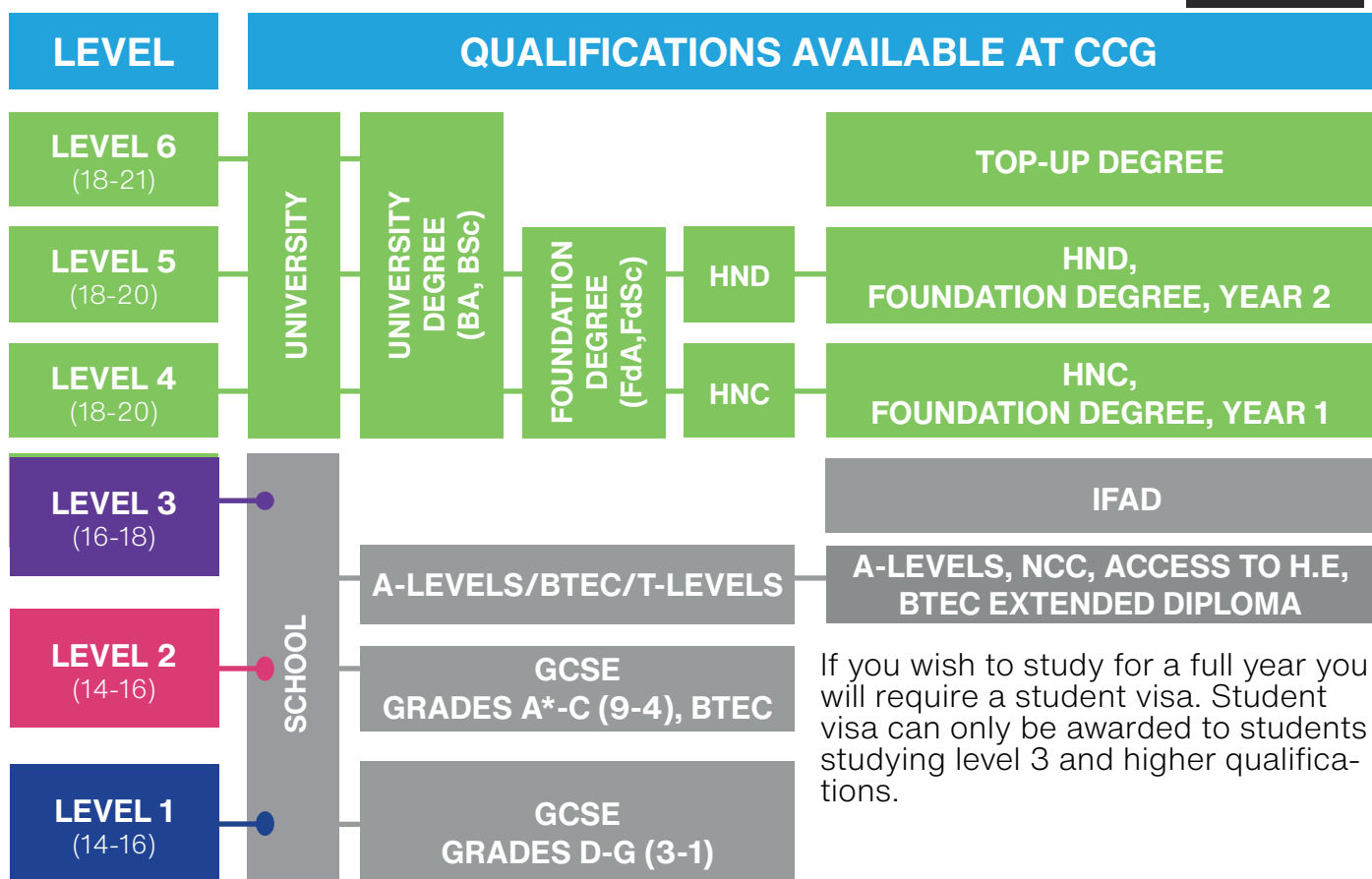
DEGREE CHOICES

- » BA (Hons) Fashion Design
- » BA (Hons) Fine Art
- » BA (Hons) Graphic Design
- » BA (Hons) Illustration
- » BA (Hons) Photography
- » BA (Hons) Textile Design
- » BA (Hons) Acting
- » BA (Hons) Costume Design for Performance & Film
- » BA (Hons) Dance and Professional Practice
- » BA (Hons) Makeup for Hair for Theatre and Media
- » BA (Hons) Musical Theatre
- » BA (Hons) Production Design for Stage and Screen
- » BA (Hons) Prop Making & Special Effects
- » BA (Hons) Stage Management & Technical Theatre
- » BA (Hons) Music Business & Management
- » BA (Hons) Music Performance
- » BA (Hons) Music Production

What can you achieve?

QUALIFICATIONS

SCAN
QR
To contact
our team



Asumi, Japanese Student

"In my class, there were lots of different nationalities, and what I learnt most from them was the English language.

Teaching language to each other is a good opportunity to make friends."



Arnaud, French Student

"I would recommend Chichester College to international students for; having an enriching experience with other international students, the quality of the teaching and all the social and sports activities. Chichester College is a really nice place to do a gap year."



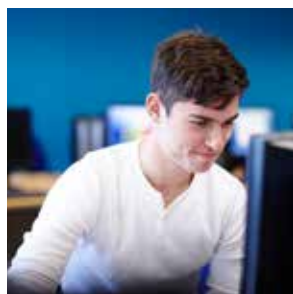
Kevser, Turkish Student

"It was amazing because this is my first experience abroad. Everyone was very helpful and they treated me like a friend.

I was impressed by Chichester and the historic city."



Academic and Vocational Prices



Invest in a British education with 'Ofsted Outstanding' Chichester College Group. Chichester College and Worthing College offer British A-Levels for international students. Have confidence that you will be studying at a renowned institution with a strong track record of achievements and quality.

Academic Fees 2024-2025

| COURSE DESCRIPTION | ANNUAL FEES | SCHOLARSHIP |
|--|-------------|---------------------|
| A-LEVELS (LEVEL 3: 2 YEARS, 3 SUBJECTS, CHICHESTER CAMPUS) | £8,500 | ¹ £2,250 |
| AS-LEVELS (LEVEL 3: 1 YEAR, 3 SUBJECTS, WORTHING CAMPUS) | £6,250 | ¹ £2,250 |
| UAL FOUADATION IN ART & DESIGN (LEVEL 3 BRIGHTON MET CAMPUS) | £15,000 | ¹ £2,250 |
| VOCATIONAL COURSES (LEVEL 3, CHICHESTER CAMPUS) | £8,500 | ¹ £2,250 |
| HIGHER EDUCATION (LEVELS 4 & 5, HNC & HND, YEAR 1&2 UNDERGRADUATE) | £8,950 | |
| TOP UP DEGREE (BUSINESS/CREATIVE MEDIA, 3RD YEAR, UNDERGRADUATE, L6) | £11,500 | |
| UAL ART & DESIGN DEGREE PROGRAMME (3 YRS NORTHBROOK) | £16,500 | |



¹ Scholarships of £2,250 per student may be awarded at the discretion of CCG based on: Student's scholarship motivational statement, an interview and academic results.

Additional Fees and Services

| SERVICE DESCRIPTION | FEE |
|--|------|
| A LEVELS SUPPORT COURSE BOOK | £90 |
| NOTARISING CERTIFICATE VALIDATION FEE (WORTHING HIGHSCHOOL PROGRAMME) | £150 |
| NOTARISING CERTIFICATE VALIDATION FEE (CHICHESTER HIGHSCHOOL PROGRAMME) | £190 |
| MATERIALS FEE (ENGLISH LANGUAGE PROGRAMME MANDATORY FEE (UP TO 11 WEEKS) | £50 |
| MATERIALS FEE (ENGLISH LANGUAGE PROGRAMME MANDATORY FEE (12+ WEEKS) | £90 |



AGES 16 & OVER

ENGLISH + MEDIA
1 JULY-12 JULY

ENGLISH + SPORT
15 JULY- 26 JULY

Explore the UK this summer

24th June - 9th August 2024

SUMMER SCHOOL

Summer School at our Chichester College campus is a special time of year for us. We are more than a language school, we welcome students from all over the world to our campus in the historic city of Chichester to grow, learn, form lasting friendships and have fun.

OUR AIM

- » Our aim is to help students transition to becoming truly global citizens while learning English in a fun and supportive environment.

LOCATION

- » Located in the historic city of Chichester on the South Coast of England, Chichester College is surrounded by beautiful countryside and coastline with quick and easy access to airports and London.

ENGLISH LANGUAGE SCHOOL

- » We are a part of the wider Chichester College Group, which includes seven campuses; awarded Ofsted 'Outstanding' across all areas. Chichester English Language School has a track record in delivering high-quality 'English as a Foreign Language' (EFL) teaching and globally recognised qualifications. We take great pride in offering a safe and supportive place to learn and grow. Our language school is accredited by the British Council for the teaching of English in the UK, having received 13 out of 15 areas of strength... placing us in the top 5% of English Language schools nationally!





GROUPS

Educational experiences tailored to your needs.

SCAN
QR
CODE
For more
info



We offer a range of bespoke courses and training packages for groups of students and trainees from employers, colleges, universities and international organisations. Our bespoke Groups offer is available at our Chichester Campus.

EXAMPLE PACKAGES

- ✓ Intensive English language course:
 - » E.g., PET/FCE exam prep course, IELTS exam prep course.
- ✓ English to support special purposes:
 - » E.g., English + Media / Business / Art / Law / Engineering / Horticulture / Humanities / Science
- ✓ Business and professional:
 - » E.g., marketing, work-ready, leadership skills and more!
- ✓ Teacher Training programme
- ✓ Tailored summer/winter camp

HOW TO GET IN CONTACT

- ✓ Email: studyabroad@chichester.ac.uk to find out more about our range of courses and competitive prices.

WHAT CAN WE OFFER?

- ✓ Access to an extensive variety of curriculum areas with specialised workshops and facilities across three campuses.
- ✓ Courses delivered in UK college environment with opportunity to interact with UK learners and staff.
- ✓ Accompanied excursions to attractions including London, Oxford, Stonehenge, Harry Potter Studios and Brighton.
- ✓ Excellent support team including a dedicated project officer, international academic support, accommodation service, visa and welfare advice.
- ✓ On-site accommodation as well as homestay options.
- ✓ In-country delivery and blended learning packages available.
- ✓ Over 40 years' experience working with international partners from a range of organisations and cultural backgrounds.

ACCOMMODATION

All our accommodation options are safe, secure and comfortable. They are closely monitored by the College and regularly inspected by external bodies to ensure the highest standards.

WOODLANDS HALLS OF RESIDENCE (16-17)

- » SINGLE ROOM, EN-SUITE (FULL BOARD)
- » SINGLE ROOM (FULL BOARD)
- » TWIN ROOM, EN-SUITE (FULL BOARD)
- » TWIN ROOM (FULL BOARD)
- » TOWELS & BEDDING INCLUDED

1 Woodlands Halls is closed during the Christmas Holiday (Dates TBC).

If homestay accommodation is needed during this period an additional fee will apply.

WESTGATE HALLS OF RESIDENCE (18 years and older)

- » SINGLE ROOM, EN-SUITE (SELF-CATERING)
- » PREMIUM ROOM, EN-SUITE (SELF-CATERING)
- » OPTIONAL STARTER PACK
- » BEDDING INCLUDED (SUPPLY OWN TOWELS)
- » FULL BOARD AVAILABLE (ADDITIONAL FEE APPLIES)

All accommodation fees are for a full stay. No refund can be given for any holiday taken during this period.

The first terms rent is due four weeks prior to arrival.

HOMESTAY ACCOMMODATION (16 years and older.)

- » HALF BOARD (CHICHESTER OR WORTHING)
- » HALF BOARD (OUTSIDE CHICHESTER)

SCAN
QR
CODE

For more
information



On-site & Homestay Options

ACCOMMODATION OPTIONS



A safe place to live and learn

WOODLANDS HALLS

- ✓ Age 16-17 at the time of admission.
- ✓ On-campus location (Chichester).
- ✓ Safe and secure with 24 hour supervision.
- ✓ Exciting activities included!
- ✓ Bedding included.
- ✓ Full board catering.
- ✓ WiFi included your stay.
- ✓ Gym membership & fitness classes included.
- ✓ Live with British students.

WESTGATE HALLS

- ✓ Age 18 or older at the time of admission.
- ✓ On-campus location (Chichester).
- ✓ Added security of 24 hour staff.
- ✓ Enjoy independant living.
- ✓ Open over all holiday periods.
- ✓ Self-catering or full board catering options.
- ✓ WiFi included in your stay.
- ✓ Gym membership included.
- ✓ Live with British students.



QUICK CHECK GUIDE



This quick guide shows all the available facilities at each of the different accommodation choices. Smoking is prohibited in all halls of residence and most homestay options:

| | EN-SUITE* | FULL-BOARD | HALF-BOARD | SELF-CATERING | KITCHEN FACILITIES | LAUNDRY FACILITIES | UTILITY COSTS | ON-SITE WARDEN | FREE WI-FI | FREE GYM | BEDDING | TOWELS |
|------------------|-----------|------------|------------|---------------|--------------------|--------------------|---------------|----------------|------------|----------|---------|--------|
| WOODLANDS HALLS | ✓ | ✓ | | | | ✓ | ✓ | ✓ | ✓ | ✓ | ✓ | ✓ |
| WESTGATE HALLS | ✓ | ✓ | | ✓ | ✓ | ✓ | ✓ | ✓ | ✓ | ✓ | ✓ | |
| HOMESTAY OPTIONS | | | ✓ | | | ✓ | ✓ | | ✓ | | ✓ | |

Woodlands Halls (Age 16-17)

Woodlands Accommodation Yearly Fees



Woodlands Hall provides secure on-campus accommodation in Chichester for up to 90 residents. It comprises single and twin-bedded study bedrooms with en-suite or shared bathroom facilities. "Full board" at Woodlands means students have credit on their student card to spend on meals at the College for breakfast and lunch. Woodlands students are served their evening meal in our College cafeteria (included in fees).

| ACCOMMODATION TYPE | DURATION | FEE | WEEKLY RATE |
|--------------------------------------|----------|---------|-------------|
| WOODLANDS SINGLE EN-SUITE FULL BOARD | 40 WEEKS | £10,600 | £265 |
| WOODLANDS SINGLE FULL BOARD | 40 WEEKS | £10,200 | £255 |
| WOODLANDS TWIN EN-SUITE FULL BOARD | 40 WEEKS | £10,200 | £255 |
| WOODLANDS TWIN FULL BOARD | 40 WEEKS | £9,800 | £245 |

Woodlands Hall Accommodation Weekly Fees



Woodlands is staffed 24 hours a day by trained supervisors. All communal corridors are fitted with CCTV to create a positive and safe environment for all students. Our Woodlands students attend one compulsory study session per week* to encourage and assist in academic achievement. Woodlands Hall of residence is a secure and safe building with a swipe card entry system and 24/7 staff presence.

| ACCOMMODATION TYPE | SEP 2023-AUG 2024 | SEP 2024-AUG 2025 |
|-----------------------------|-------------------|-------------------|
| SINGLE EN-SUITE | £257 | £265 |
| SINGLE ROOM / TWIN EN-SUITE | £247 | £255 |
| TWIN ROOM | £237 | £245 |

**An additional fee applies for study sessions; please see our additional fees page 35.*



Westgate Halls (Age 18+)

Westgate Accommodation Yearly Fees (SELF-CATERING)



Westgate is an on-campus hall of residence in Chichester offering full-board or self-catering accommodation for up to 160 residents. All rooms are single with en-suite facilities. There are also rooms specifically designed to meet the needs of disabled students. Westgate Halls are for students who are 18 and over at the time of admission.

| ACCOMMODATION TYPE | DURATION | FEE | WEEKLY |
|--------------------------------|----------|--------|--------|
| SINGLE EN-SUITE SELF-CATERING | 42 WEEKS | £6,300 | £150 |
| PREMIUM EN-SUITE SELF-CATERING | 42 WEEKS | £7,140 | £170 |

Bedding is provided for all Westgate residents.
Full board option available upon request.

Westgate Accommodation Weekly Fees (SELF-CATERING)



Westgate provides shared kitchens (between six students). Students provide their own crockery and kitchen utensils. There are shared facilities, including a social space with a TV and DVD player, food and drink vending machines and a card-operated laundry room. Westgate Hall of residence is a secure and safe building with a swipe card entry system for each block, flat and individual room.

| ACCOMMODATION TYPE | SEP 2023-AUG 2024 | SEP 2024-AUG 2025 |
|--------------------------------------|-------------------|-------------------|
| FULL YEAR SINGLE EN-SUITE (42 WEEKS) | £143 | £150 |
| SHORT TERM SINGLE EN-SUITE* | £153 | £160 |
| PREMIUM FULL YEAR EN-SUITE* | £163 | £170 |
| PREMIUM SHORT TERM EN-SUITE | £173 | £180 |

Homestay Accommodation

CHICHESTER & WORTHING CAMPUSES

HOMESTAY OPTIONS 16 YEARS and OLDER

- ✓ Half-board homestay with breakfast & dinner provided during the week, and breakfast, lunch and dinner provided at the weekend.
- ✓ WiFi is provided.
- ✓ Laundry will be done weekly

Note: All room types are subject to availability. Please check with us.

Homestay Yearly Fees Chichester & Worthing



Staying with our Homestay Hosts provides a unique opportunity to stay in a local home and experience British culture. Your host may be a single person, a couple or a family. Your host will also be delighted to learn more about you. It's a great way to improve your English. All our hosts and staff are vetted by UK police (via a DBS check). Homestay is available to all students on full-time courses.

| ACCOMMODATION TYPE | DURATION | FEE | WEEKLY |
|--|----------|--------|--------|
| HALF BOARD IN CHICHESTER (16 YEARS AND OLDER) | 42 WEEKS | £7350 | £175 |
| HALF-BOARD OUTSIDE CHICHESTER (16 YEARS AND OLDER) | 42 WEEKS | £6720 | £160 |
| HALF BOARD IN WORTHING (16 YEARS AND OLDER) | 42 WEEKS | £7.350 | £175 |

You can specify whether you wish to be in a smoking or non-smoking household and choose to stay in accommodation with or without pets or children. All our homestay providers are inspected by a member of the accommodation team each academic year. We conduct a fire risk assessment and gas safety check and ensure hosts complete our safeguarding training in line with the college policies. Our host providers provide unlimited internet to their students at no extra cost.



Accommodation Additional Fees and Services



| SERVICE DESCRIPTION | FEE |
|---|-----|
| WESTGATE STARTER PACK (BASIC) | £18 |
| WESTGATE STARTER PACK (PREMIUM) | £65 |
| STUDY SESSIONS (WOODLANDS RESIDENTS ONLY) | £85 |

Payment: In order to secure your accommodation you will need to pay for a full term (or your entire stay if staying for a shorter duration) no less than four weeks prior to arrival.



Airport Transfers- Chichester

The following prices are one way prices and are approximate. For multiple drop offs a charge of £5 per passenger applies. Return transfer is also available. We use a reputable taxi firm who have provided transfers for our students for many years.

» GATWICK
£159

» HEATHROW
£192

» STANSTED
£350

» SOUTHAMPTON
£140

Taxi prices are subject to change and will be confirmed upon booking.



STUDENT TESTIMONIALS



Eleonora, Italian Student

"I studied English and Media, which helped me learn a lot of new vocabulary and English in general."

My favourite thing to do at Chichester was to study with a lot of international people and learn many things about other cultures."



Jon, Swiss Student

"I studied English and Media, which helped me learn a lot of new vocabulary and English in general."

My favourite thing to do at Chichester was to study with a lot of international people and learn many things about other cultures."



Vanina, Belgian Student

"Alongside my English class, I studied fashion. During my fashion lessons I learnt all the processes to achieve a fashion collection. I'm really impressed of myself when I'm thinking about all the techniques that are new to me!"



"I enjoyed this year and I couldn't expect better. Since my first day all the staff helped me with everything."

I enjoyed my stay so much that I advised my sister to do the same next year and she is already registered."

Gonda, French Student

Skills for Employment INTERNATIONAL PARTNERSHIPS

We have experience in a variety of educational delivery models including; online, blended and face to face teaching. Our programmes lead to nationally or internationally recognised qualifications and others to institutional or industry recognised certification. We pride ourselves on delivering world-class skills solutions, we do this by working closely with a variety of like-minded organisations so that together we can provide innovative and world-class skills solutions.

EMPLOYER ENGAGEMENT

- » We work with over 2,000 employers from small businesses to large corporates. This includes Rolls Royce Motor Cars, Gatwick Airport, Boeing, Canon and Fujitsu.

CONSULTANCY WORK

- » CCG works with institutions around the globe providing consultancy services in the areas of vocational education, apprenticeships, curriculum planning, teacher training and management.

FLAGSHIP PROJECTS

- » **Industrial Design (HID):** Learners gained the experience, knowledge, understanding and skills necessary for work in design industries.

SECTOR SPECIALISMS

- » Hospitality & Tourism
- » Catering
- » Creative Arts
- » Engineering
- » Quality Assurance
- » English Teacher Training
- » Vocational Training:
Design and Implementation

We have collaborated with governments and organisations around the world assisting them in managing the implementation of curriculum, vocational education and educational leadership. We also offer Teacher training programmes in collaboration with our Anglia Franchise network.

USEFUL INFORMATION

CCG WEBSITES

If you require more information on courses, governance, policies or facilities available to international students please see the individual website for the CCG college you are interested in studying at:

Group Website: www.chigroup.ac.uk

Chichester College: www.chichester.ac.uk

Brighton MET & Northbrook: www.gbmc.ac.uk

Worthing College: www.worthing.ac.uk

Brinsbury college: www.brinsbury.ac.uk

Crawley College: www.crawley.ac.uk

Haywards Heath College: www.haywardsheath.ac.uk

UKCISA



The UK Council for International Student Affairs (UKCISA) is the UK's national advisory body supporting international students and those who work with them. UKCISA provide advice, guidance and information about all aspects of the international student experience, from immigration and fees to mental health, culture shock and orientation.

Find out more: www.ukcisa.org.uk



www.ccgstudyabroad.com



+44 (0)1243 786 321



studyabroad@chichester.ac.uk

TERM DATES: 2024-2025

- | | |
|--------------------|------------------------|
| » AUTUMN TERM 2024 | » 2 SEPT - 20 DEC 2024 |
| » AUTUMN HALF-TERM | » 28 OCT - 31 OCT 2024 |
| » CHRISTMAS BREAK | » 23 DEC - 03 JAN 2025 |

- | | |
|--------------------|------------------------|
| » SPRING TERM 2025 | » 06 JAN - 4 APR 2025 |
| » SPRING HALF-TERM | » 17 FEB - 21 FEB 2025 |
| » EASTER BREAK | » 7 APR - 18 APR 2025 |

- | | |
|--------------------|------------------------|
| » SUMMER TERM 2025 | » 21 APR - 20 JUN 2025 |
| » SUMMER HALF-TERM | » 26 MAY - 30 MAY 2025 |

COLLEGE CLOSURES

- | | |
|----------------|---------------|
| » 30 SEPT 2024 | » 07 NOV 2024 |
| » 18 APR 2025 | » 21 APR 2025 |
| » 05 MAY 2025 | » 26 MAY 2025 |

EFL CLOSURE DATES*

- | | |
|---------------|--------------|
| » 20 DEC 2024 | » 4 APR 2025 |
| » 20 JUN 2025 | |

*All information is correct at time of publication. If you have any issues or would like to enquire about our academic courses, please get in touch.

HOW TO APPLY

EXPRESS INTEREST

» Email us:

Chichester: studyabroad@chichester.ac.uk

Worthing: m.cox@worthing.ac.uk

Brighton MET: anne.mariequeija@gbmc.ac.uk

Northbrook: anne.mariequeija@gbmc.ac.uk

Contact us to express your interest and enquire course choices, prices and accommodation.

APPLY FOR COURSES

- » In order to process your application, the College requires:
 - ① Your completed student application form.
 - ② A copy of your passport.
 - ③ Evidence of your level of English as per course entry requirements.
 - ④ Other required documents specified in the course entry requirements.

PRELIMINARY BOOKING

- » The International Admissions staff will send you or your representative:
 - ① A conditional offer
 - ② Proforma showing the indicative costs for your stay and studies. Payment details will also be on the proforma.

PAYMENT & CONFIRMATION

- » You will receive your booking confirmation after required payment is made.
- ① **Students applying for Student Visa:** full fees for the first year of study are required to secure a place plus an additional fee of **£25** for CAS insurance.

VISA APPLICATIONS

- » Student route applications made overseas are charged for by the UK visas and immigration department.
- » Graduate route visa applications made overseas are charged for by the UK visas and immigration department.
- » Once booking is confirmed, the International Admissions staff will send you/your representative the relevant documents you need to support your visa application.

For detailed information on visa fees see the UK government website: www.gov.uk

PRE-ARRIVAL

- » You must inform the College when your visa is issued and confirm your arrival date.
- » You must complete any remaining paperwork as mentioned if applicable.
- » Airport transfer can be arranged upon request at an additional cost.
- » Host family details may not be available at the time of application but will be given to you at least two weeks before your arrival.
- » You are welcome to download our latest Pre-Arrival Guide from our website and get ready for your travel.

GROUP BOOKINGS

Email Marie: kleshchovam@chichester.ac.uk



SCAN QR CODE

Please contact our team to enquire about group bookings.

Note: Our refunds policy can be found in our Terms & Conditions on our website.




Address:

International Department
Chichester College
Westgate Fields
Chichester
West Sussex,
PO19 1SB

CONTACT DETAILS

TELEPHONE, EMAIL & WEB

 +44 (0)1243 786321


 studyabroad@chichester.ac.uk

 www.ccgstudyabroad.com

All information is correct at time of publication.
If you have any concerns or would like to enquire
about our courses, please do get in touch.

SOCIAL MEDIA CHANNELS

 chichestercollegeint

 chichesterinternational

 Chi_College_Int

 Chichester College Group International

VISA INFORMATION

 For visa requirements, please
visit www.gov.uk/check-uk-visa